

# *Pacific Fishermen, Inc.*

Professional Ship and Yacht Repair to 300 ft. Since 1946  
260 ft. Moorage Dock with 80 ft. and 160 ft. Marine Railways to 600 tons  
145 ft. x 600 ton Covered Lift Dock and Sidetrack for Climate Controlled Work

Tel: 206-784-2562  
Fax: 206-784-1986  
[info@pacificfishermen.com](mailto:info@pacificfishermen.com)

5351 24th Ave NW  
Seattle, WA 98107  
[www.pacificfishermen.com](http://www.pacificfishermen.com)

## **Pacific Fishermen's Shipyard Tunes Up *F/V OCEANIC***

She gets there faster, saves fuel, pulls harder, pitches less, has better trim, less vibration, less cavitation and gets home sooner. Now Captain Luis Arruela says he's off to Alaska to prove he can catch more fish. The *F/V OCEANIC* was originally built by MARCO in 1978 for Ivar Reitan and Pacific Fishermen Shareholder's Einar Langesater and the Johannessen family (Lloyd, Norman and father John) with Pacific Fishermen's General Manager Doug Dixon serving as Project Engineer during construction.



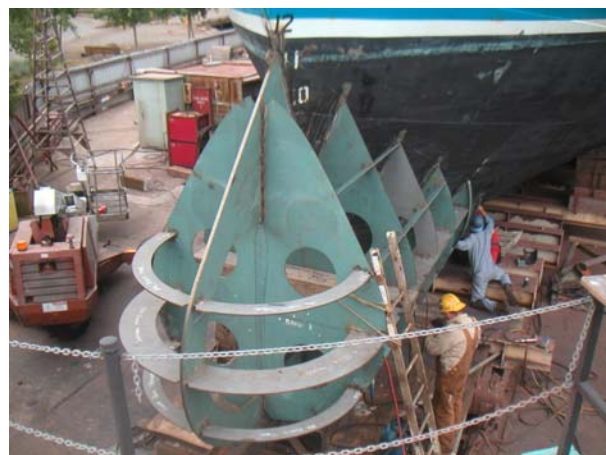
**All Dressed Up for the Syttende Mai Parade**



**New Double Bottom Transverse Bulkhead**



**New Kruger/Rice Speed Nozzle and Propeller**



**New Jensen Maritime Bulbous Bow**

The *F/V OCEANIC* joins the proud club of fishing vessels sporting Pacific Fishermen's bulbous bows including: *F/V STARFISH*, *F/V SILVER DOLPHIN*, *F/V STORMY SEA*, *F/V MARGUN* and *F/V ALLSTAR*. Other improvements include a new Kruger/Rice speed nozzle and highly skewed and raked five-bladed propeller together with a new double bottom transverse bulkhead for better trim.

Pacific Fishermen's shipyard was founded in 1946 on the site of the 1890's Ballard Marine Railway, famous for wooden halibut schooners and Navy minesweepers later named *CALYPSO* by Jacques Cousteau and *WILD GOOSE* by John Wayne. A 80' x 200 ton marine railway, 160' x 600 ton marine railway and the original Rowe Machinery Works 145' x 600 ton covered screw lift dock with 140' covered sidetrack rails, provide for extended out of the water repairs on dry land. All three facilities are equipped for hull cleaning, high pressure washing and sandblasting with full environmental containment and on-site shipyard run-off wastewater reprocessing.